

## Features

- ◇ Concave oval structure, suitable for cylindrical workpiece.
- ◇ The internal slot structure can effectively increase the friction force between suction cup and workpiece.



## Applications

- ◇ Lithium battery
- ◇ Cylindrical workpiece
- ◇ Tubular workpiece

## How to order

SOG 15×40 N – M5F

① ② ③ ④

① Series	② Diameter	③ Material & Hardness	④ Connection thread
<b>SOG</b>	<b>15×40</b> <b>35×100</b>	<b>N</b> – NBR <b>45</b>	<b>M5F</b> – M5 Female thread <b>M5M</b> – M5 Male thread <b>G2F</b> – G1/4 Female thread <b>G2M</b> – G1/4 Male thread <b>G3F</b> – G3/8 Female thread <b>M10M</b> – M10 Male thread <b>M14M</b> – M14×1.5 Male thread <b>RA</b> – Rectangular adapter

## Selection

Model/Connection thread	M5F	M5M	G2F	G2M	G3F	M10M	M14M	RA
<b>SOG15×40</b>	●	●	–	–	–	–	–	–
<b>SOG35×100</b>	–	–	●	●	●	●	●	●

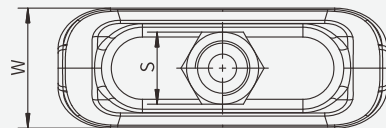
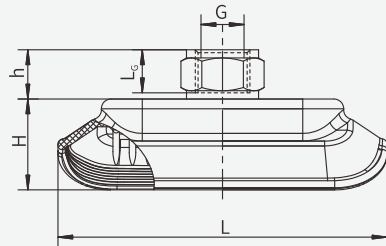
◇ Note : "●"-default, in stock: "–"unavailable.

## Technical parameters

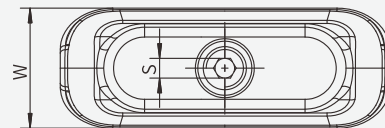
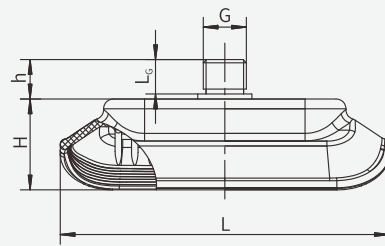
Model	Pull-out force (N)	Inner volume (cm <sup>3</sup> )	Min. radius of curvature(mm)	Recommended hose diameter(mm)
<b>SOG15×40</b>	22	1.3	9	6
<b>SOG35×100</b>	122	11	25	8

◇ Note: Testing vacuum level: –60kPa. Testing Workpiece: smooth and clean surface.  
 The data of pull-out force as above are figured out without considering safety factor.  
 The data may be different according to different workpiece surfaces.

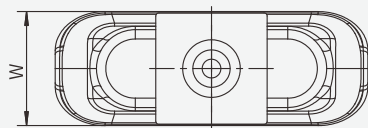
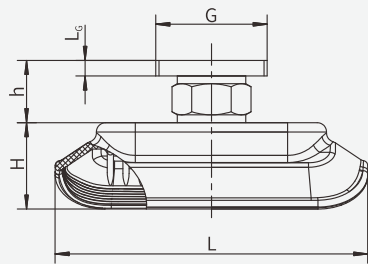
SB  
SBA  
SBB  
SBF  
SBOF  
SFT  
SFA  
STP  
SBL  
SBLP  
SBS  
SF  
SU  
SUF  
SFG  
SFU  
STC  
SFF  
SFM  
SDM  
SHT  
SOFA  
SOB  
SOF  
SOG  
SFP  
SBP  
SXP  
SGP  
SØL  
SH  
SHB  
SZ  
SAN  
SAO  
SPA  
SPC  
SPF  
SPJ  
SPU  
SNP  
SOP

**Dimensions(mm)**


Female thread connection(F)



Male thread connection(M)



Rectangular adapter(RA)

Model/Size	L	W	H	G	L <sub>g</sub>	h	S
<b>SOG15×40-M5F</b>	42	15.5	14	M5	–	–	–
<b>SOG15×40-M5M</b>	42	15.5	14	M5	5	6.5	2.5
<b>SOG35×100-G2F</b>	100.5	36.5	28	G1/4	11	14	17
<b>SOG35×100-G2M</b>	100.5	36.5	28	G1/4	12	13.5	5
<b>SOG35×100-G3F</b>	100.5	36.5	28	G3/8	11	14	22
<b>SOG35×100-M10M</b>	100.5	36.5	28	M10	12	13.5	5
<b>SOG35×100-M14M</b>	100.5	36.5	28	M14×1.5	12	13.5	5
<b>SOG35×100-RA</b>	100.5	36.5	28	□32	4.7	18.7	–

◇ Note: Please refer to page 22 for mounting parts selection.